

SHAC



**APPLICATION  
GUIDE**



**SHAC**<sup>®</sup>

**environmental products inc.**

# SHAC<sup>®</sup> Feed Additive

SHAC *Feed Additive* is designed for use in hog operation feeding programs. When added to feed, SHAC *Feed Additive* reduces odors and harmful ammonia gases within hog barns. SHAC *Feed Additive* is available in either liquid or granular form to best suit the users needs.



## The benefits of SHAC *Feed Additive*:

- Reduces the concentrations of ammonia gas in hog barns, creating safer and healthier conditions for workers and livestock.
- Reduces odors in hog barns, lowering the impact of hog operations on the community.
- In various hog industry research studies, chronic exposure to ammonia has been correlated with reduction in average daily gain and feed efficiency as well as increase in disease and medication costs. SHAC *Feed Additive* products are effective in reducing the levels of this harmful ammonia gas to which hogs are often continuously exposed.



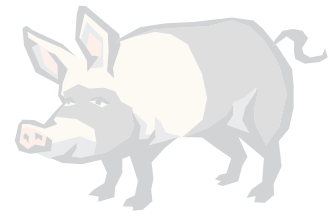
**SHAC FEED ADDITIVE IS DESIGNED TO BE APPLIED TO COMPLETE FEEDS.**

### Liquid Feed Additive Application Rates:

Application	Rate
Growers & Finishers	250 ml (1/4 litre) Liquid SHAC <i>Feed Additive</i> per tonne (1000 kg) of complete feed ration
Weaners & Sows	500 ml (1/2 litre) Liquid SHAC <i>Feed Additive</i> per tonne (1000 kg) of complete feed ration

### Granular Feed Additive Application Rates:

Application	Rate
Growers & Finishers	650 grams (0.650 kg) SHAC Granular Feed Additive per tonne (1000 kg) of complete feed ration
Weaners & Sows	1300 grams (1.3 kg) SHAC Granular Feed Additive per tonne (1000 kg) of complete feed ration



## NOTE:

- For best results, use in conjunction with SHAC *Manure Digester* for reduction of solids accumulation in pits and lagoons.

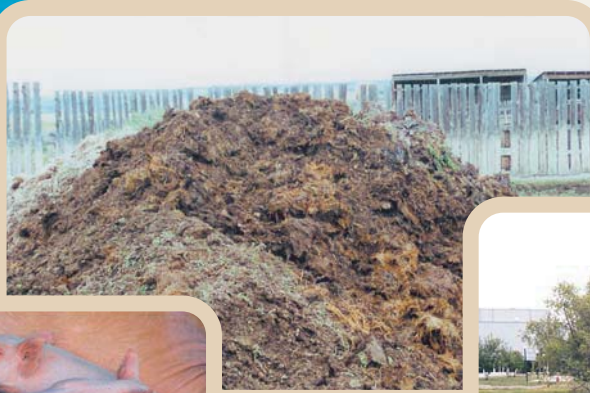
### CFIA Registration

The Canadian Food Inspection Agency (CFIA) has approved the use of SHAC Liquid Feed Additive for Swine (**Reg # 480573**) and SHAC Granular Feed Additive for Swine (**Reg # 480549**) as effective odor and ammonia gas reducing treatments. For more information contact the SHAC office at 1-888-533-4446.

## Optional Application Methods:

- **Manual Application:** SHAC Liquid *Feed Additive* and SHAC Granular *Feed Additive* may be applied manually during the mixing of complete feeds in any type of feed system.
- **Microboxes:** SHAC Granular *Feed Additive* may be applied to complete feeds using microbox systems.
- **Batch Mixers:** SHAC Liquid *Feed Additive* and SHAC Granular *Feed Additive* may be added to batch mixers containing complete feed by simply pouring the required amount of product into the mixer. Some operators may prefer to mix the product into water.
- **Fully Automated / Computerized Mills:** SHAC Liquid *Feed Additive* may be applied to complete feeds either manually or by metering into the feed ration. SHAC Granular *Feed Additive* may be applied to complete feeds either manually or through a microbox system.





**SHAC**  
Feed  
Additive

**SHAC**  
Manure  
Digester

**SHAC**  
Ponder

**SHAC**  
Shactivate  
SEWAGE DIGESTER

FOR MORE INFORMATION CONTACT:

**SHAC**<sup>®</sup>

**environmental products inc.**

PHONE TOLL FREE: 1-888-533-4446

PHONE: (403) 528-4446

FAX: (403) 529-9334

E-MAIL: [office@shac.ca](mailto:office@shac.ca)

WEBSITE: [www.shac.ca](http://www.shac.ca)

P.O. Box 73

Medicine Hat, Alberta

Canada T1A 7E5